

REV.  
A

AS4325

RATIONALE

ADDED NOTE "1" TO SPECIFY INTENDED USE, UPDATED TABLE 1 COLUMN HEADING, UPDATED TITLE PER ARP1987.

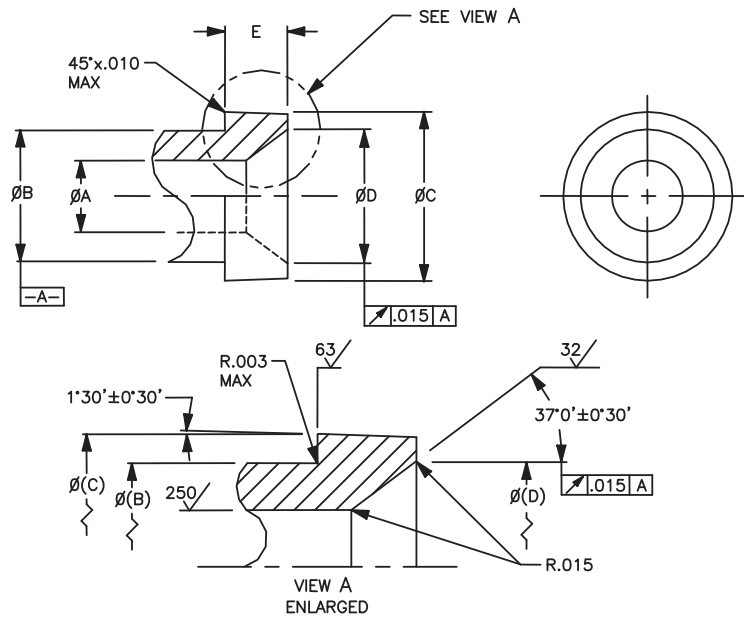


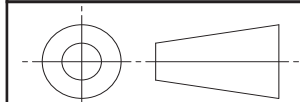
FIGURE 1 - FITTING END, CONICAL

TABLE 1 - DIMENSIONS

BASIC NUMBER AS4325 /B/ SIZE CODE	(NOMINAL TUBE SIZE)	A ±.005	B ±.001	C +.003 -.000	D ±.005	E
04	.250	.162	.296	.380	.302	.136 - .146
06	.375	.286	.431	.499	.442	.164 - .178
08	.500	.388	.561	.679	.582	.208 - .228
10	.625	.474	.689	.794	.720	.224 - .244
12	.750	.583	.825	.969	.862	.251 - .281
16	1.000	.786	1.080	1.219	1.110	.266 - .296
20	1.250	1.036	1.338	1.533	1.428	.297 - .327
24	1.500	1.281	1.608	1.783	1.685	.329 - .359
28	1.750	1.578	1.881	2.158	2.073	.360 - .390
32	2.000	1.750	2.158	2.408	2.245	.391 - .421

SAE values your input. To provide feedback on this Technical Report, please visit <http://www.sae.org/technical/standards/AS4325A>

THIRD ANGLE PROJECTION



CUSTODIAN: G-3/G-3B

PROCUREMENT SPECIFICATION: NONE /1/



AEROSPACE STANDARD

FITTING END, CONICAL  
DESIGN STANDARD

AS4325  
SHEET 1 OF 2

REV.  
A

SAE Technical Standards Board Rules provide that: "This report is published by SAE to advance the state of technical and engineering sciences. The use of this report is entirely voluntary, and its applicability and suitability for any particular use, including any patent infringement arising therefrom, is the sole responsibility of the user." SAE reviews each technical report at least every five years at which time it may be revised, reaffirmed, stabilized, or cancelled. SAE invites your written comments and suggestions.